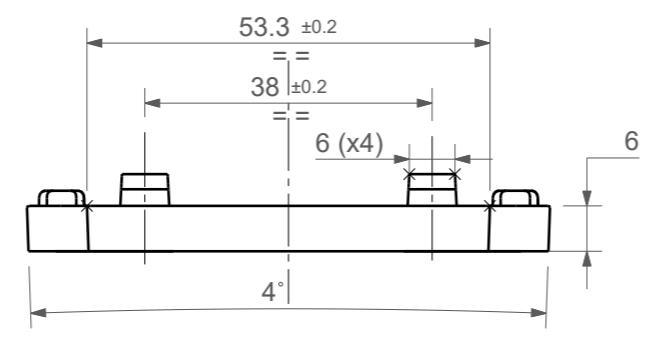
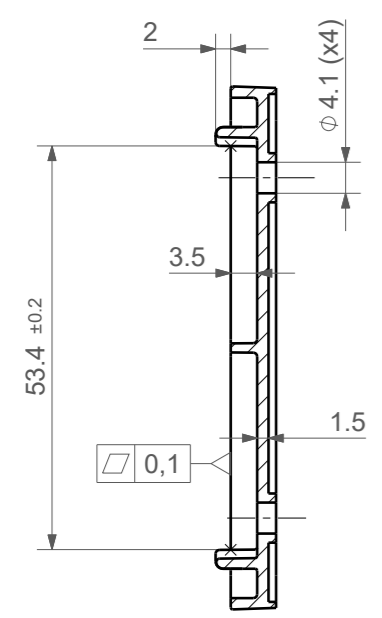


Tolleranze generali

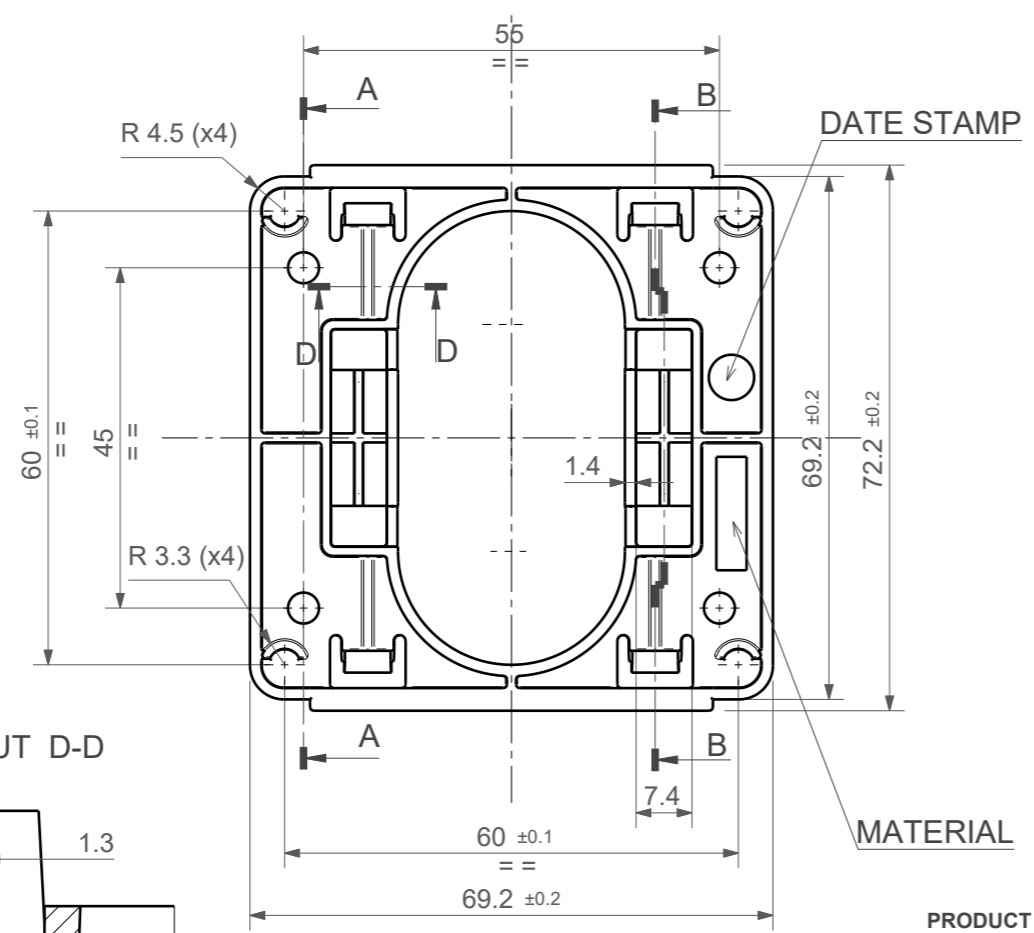
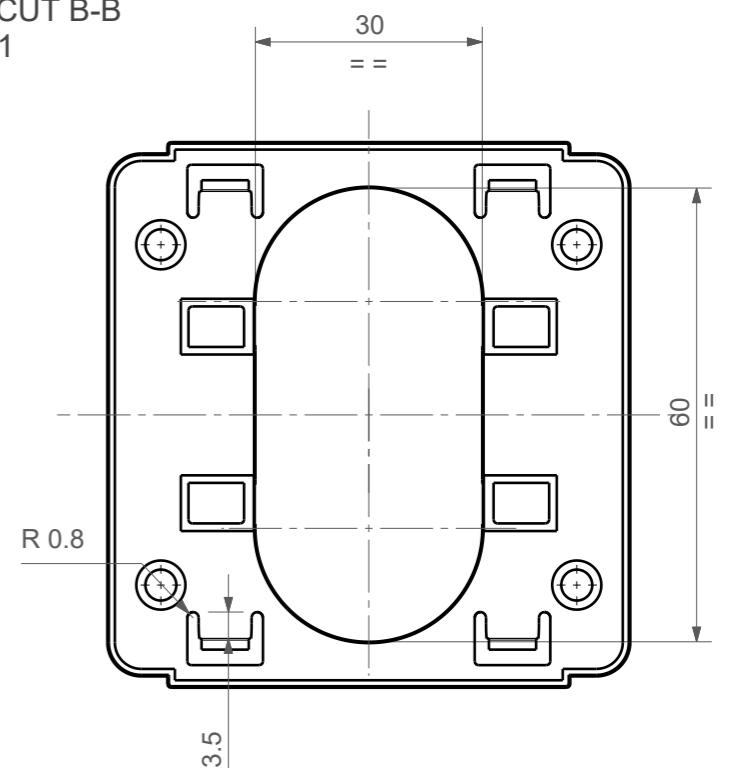
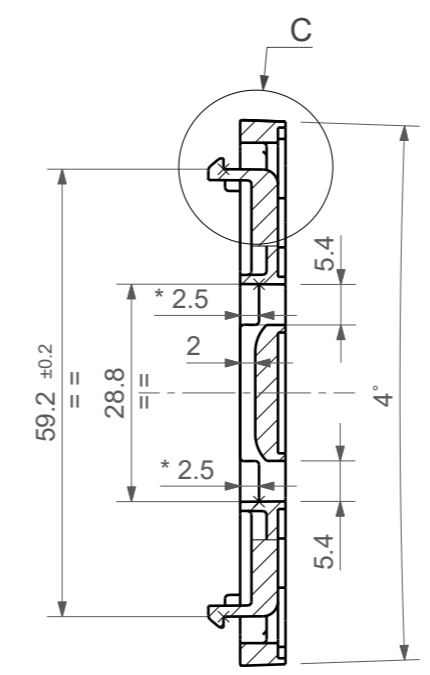
Particolari stampati in materiale termoplastico: rif. ISO 2768mK - Particolari lavorati alle macchine utensili: rif. UNI EN 22768
Particolari tranciati in metallo: rif. UNI EN 22768-grado IT10 per dim. lineari - grado IT11 quote di piega - angoli di piega ±1



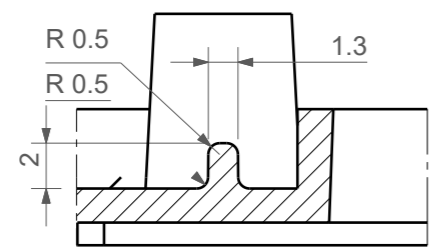
SECTION CUT A-A
1:1



SECTION CUT B-B
1:1



SECTION CUT D-D
3:1



PRODUCT SPECIFICATIONS:

MATERIAL: >PC-ABS< LUPOY GN5001RFH
Only brand new material must be used;
no recycled / reworked material is allowed.
COLOUR: Black
EXTERNAL SURFACE FINISH: VDI 30
INNER SURFACE FINISH: Polished with 240 filament grain (58,5 m)

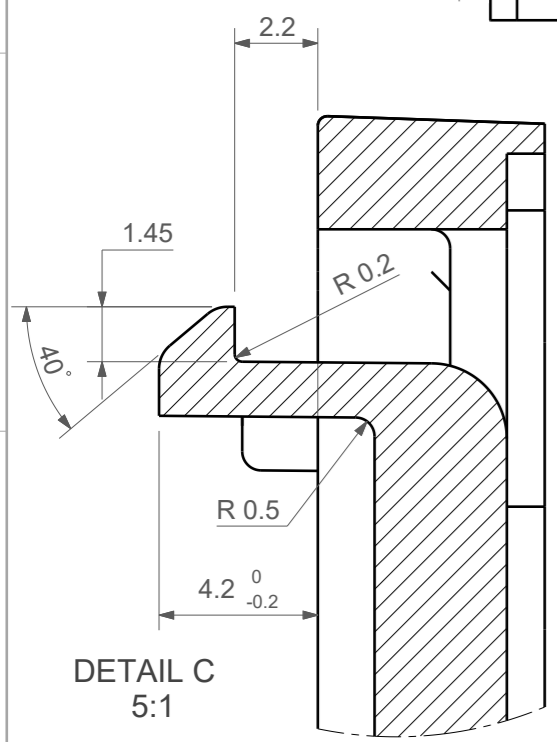
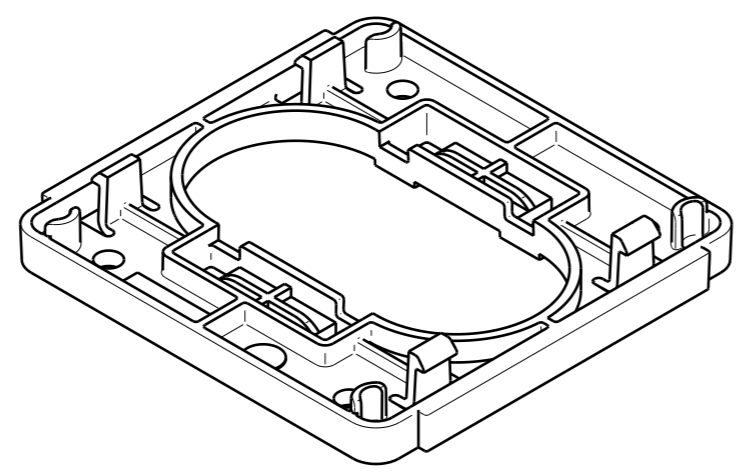
MISSING DIMENSIONS:

Please refer to 3D model used for views and dimensions on this drawing.

REMARKS:

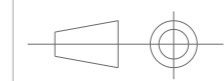
- Product should have a perfect outside shape and finish, without any sinkmarks, cracks, flow marks, scratches deformations or burrs;
- Surfaces must be clean from any substance that can influence the aesthetic aspect of pad printing, laser etching, label adhesion or painting process;
- Date Stamp must be present. Size, shape and position must be agreed with TECHNO;
- Mould design concept (e.g.: injection point, ejector pins, parting lines, etc.) must be agreed with TECHNO;
- All dimension shown on this drawing must be included in the supplier's dimensional report;
- Symmetrical areas: please refer to the dimensioned side. The supplier's dimensional report must include both sides;
- Unless different indications, General broken corners radius: 0,1mm - General draft: 1°;
- External surface finish shall comply with IOTH BOX - COPERCHIO and IOTH BOX - SCATOLA.

(*) Dimensions changed



A meno di legge o saranno la proprietà di questo documento con riserva di copyright, di consegnarlo o di renderlo disponibile, anche parzialmente, a terzi senza autorizzazione scritta della Techno srl.
This drawing and all informations contained here can not be used or reproduced, integral or partially, without Techno srl written authorization.

Materiale - Material: See product specifications		Titolo - Title: TH212: STAFFA	
Trattamento - Treatment: ---		TH212: BRACKET	
N° documento cliente Customer ref. ---	Peso (g): 10 Weight (g):	Progetto - Project: TH212: IOTH BOX	
Disegnato - Drawn by: L. Bellini	Data: 13-04-2023	Scala - Scale: 1:1	
Controllato - Checked by: M. Strada	Data: 13-04-2023	Formato - Format: A3	



N° Disegno - Drawing N° 6000601YC	Rev. Rev. 05	Foglio N° Sheet N° 1	N° Fogli N° of sheets 1
Nome file - Filename 6000601YC_TH212_STAFFA			